

ISABEL

Triggering Sustainable Biogas Energy communities through Social Innovation

Coordinator: Q-PLAN INTERNATIONAL ADVISORS LTD

Website: www.qplan-intl.com

Contact persons: Dimitrios Daskalakis (daskalakis@qplan.gr),
Iakovos Delioglanis (delioglanis@qplan.gr)

Telephone: +30 2310 257 277, +30 2310 411 191

ISABEL Portal: www.isabel-project.eu

Contact us: info@isabel-project.eu

Start date: January 2016

Duration: 36 months

Full Consortium of Partners

- Q-PLAN INTERNATIONAL ADVISORS LTD (GR)
- INSEAD, Social Innovation Center (FR)
- Agency for Renewable Resources (DE)
- University of Surrey (UK)
- Global Biotechnology Transfer Foundation LTD (UK)
- Euroenergy Biogas West SA (GR)
- White Research SPRL (BE)
- Lake Constance Foundation (DE)

ISABEL is all about promoting, supporting and developing **community biogas** in Europe. The project is set on providing all the framework conditions for biogas communities to shape, develop and thrive. It works on all angles to pave the way for the **transition from traditional supply chains to community ownership** and take full advantage of the ample societal benefits of **regional community-driven biogas systems**, fuelled and inspired by **Social Innovation** principles. To realize this vision ISABEL will employ its **"5E strategy"** with the following objectives:

Educate - *Re-position biogas energy by re-branding it as a "public good"*. To achieve this ISABEL's partners will analyse the needs and perceptions of local stakeholders and communicate the unknown societal and environmental dimensions of Anaerobic Digestion.

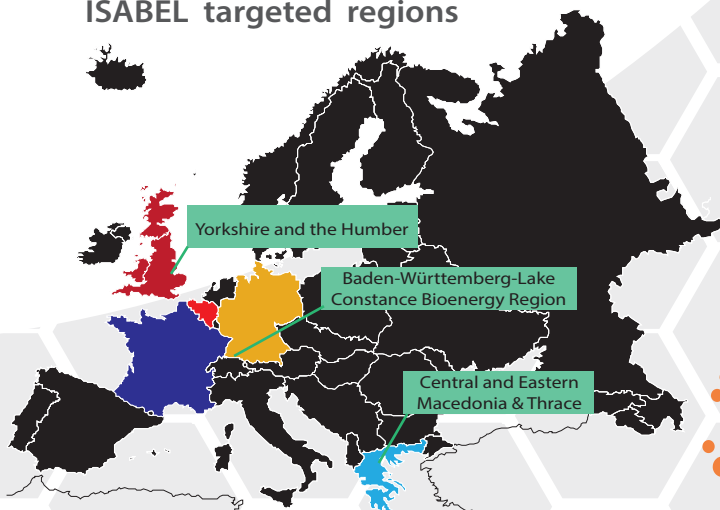
Engage - *Enable the development of regional Biogas Communities*. ISABEL will lobby and unite existing initiative and socially-oriented local organisations and associations while embarking on an awareness and engagement campaign to grow the Communities.

Empower - *Utilize the created momentum through Social Innovation and Public Participation*. ISABEL will deploy a bouquet of diversified activities consisting of digital tools, expert knowledge, and participatory processes providing to the Communities all the necessary support to govern the local Biogas production and consumption system.

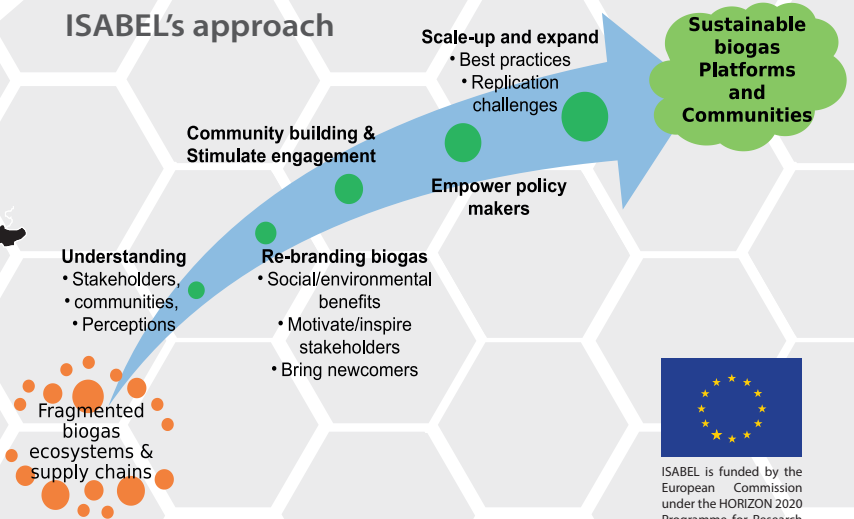
Evaluate - *Assess the local interventions and drafting lessons and guidelines*. Upon doing so ISABEL will ensure that established practices will be used to improve policies and create a favourable environment that will sustain the regional Biogas Communities.

Expand - *Maximise impact through transfer and replication*. To this end we will communicate the gathered experience, success stories and best practices through ISABEL networks across Europe and provide support for its replication in other areas.

ISABEL targeted regions



ISABEL's approach



ISABEL is funded by the European Commission under the HORIZON 2020 Programme for Research and Innovation (Grant Agreement No 691752)